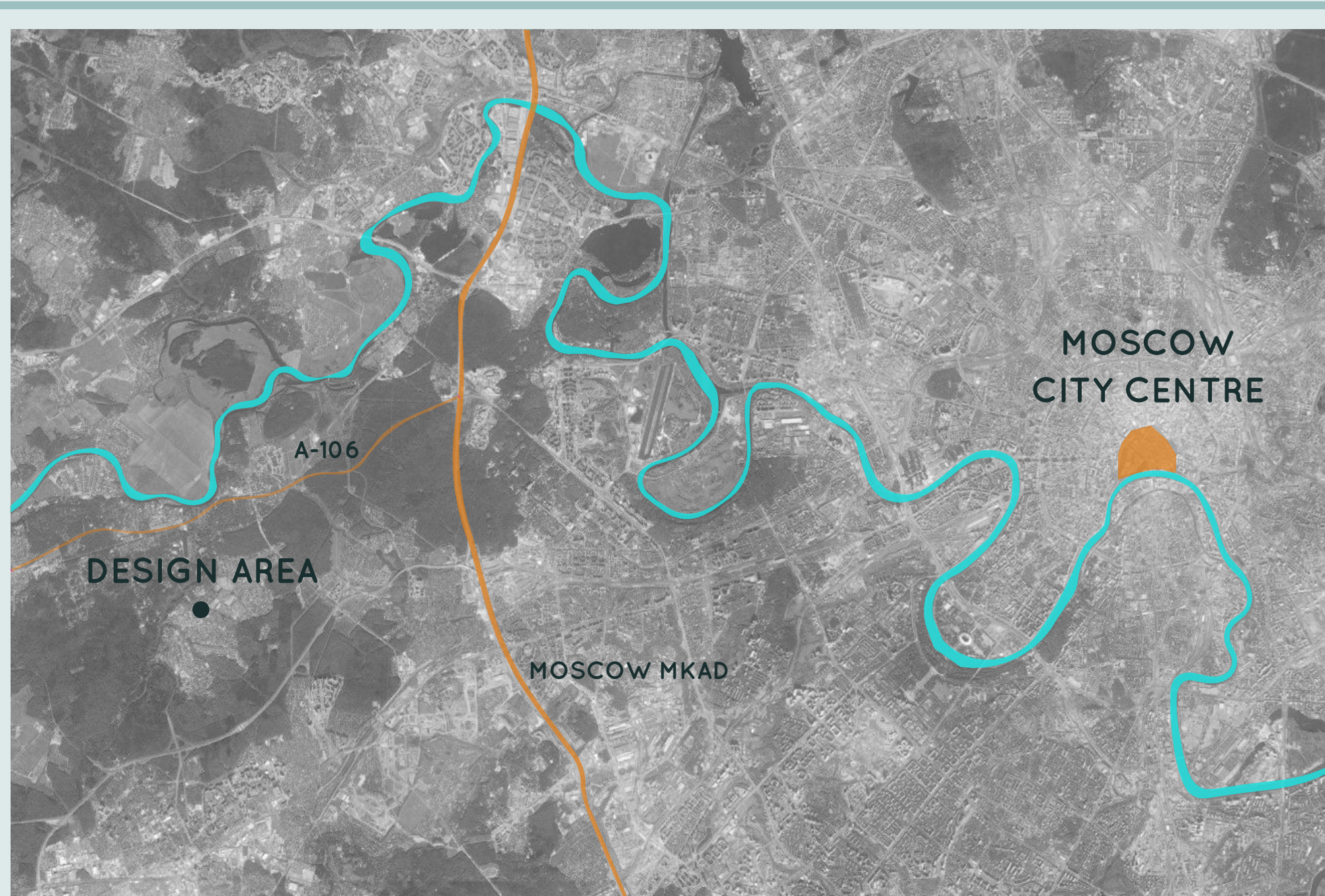
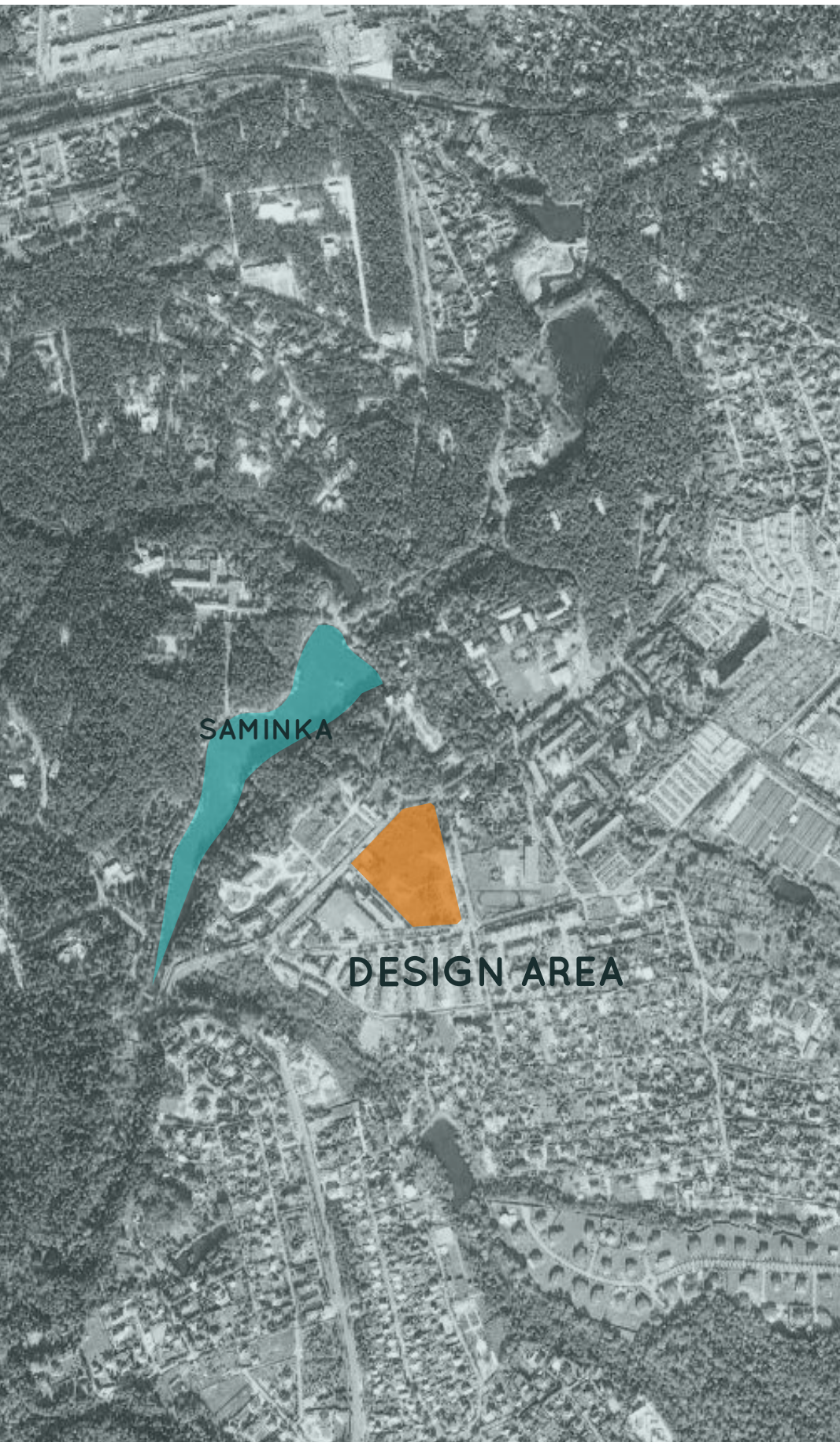


BARVIKHA MASTERPLAN FINAL

MOSCOW  
2016.08.12.



# ACCESSIBLE, WELL POSITIONED, UNIQUE LOCATION





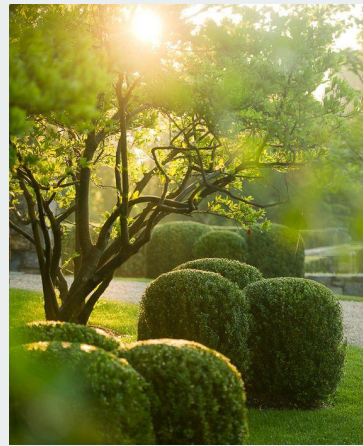


## PARK

PEDESTRIAN ENTRANCE  
PLAYGROUND  
RETAIL CONNECTION

## GREEN PROMENADE

WALKWAY



## ENTRANCE PARK

CAR ENTRANCE  
PLAYGROUND



### AREA SCHEDULE - GBA

	No.	(P)	M <sup>2</sup>
GATE HOUSE	1	1	87,62
KINDERGARTEN	1	8	705,15
RETAIL	1	17	1 400,17
RESIDENTIAL			
TOWNHOUSES	183	366	31 768,20
APARTMENTS	37	37	2 431,04
<b>TOTAL</b>			<b>36 392,18</b>





INSPIRING  
ENVIRONMENT



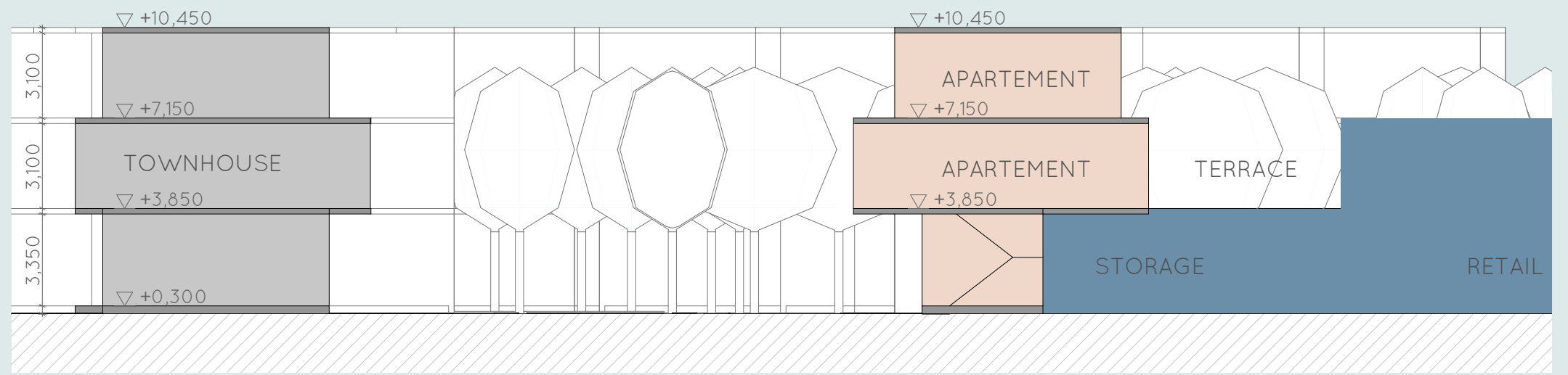




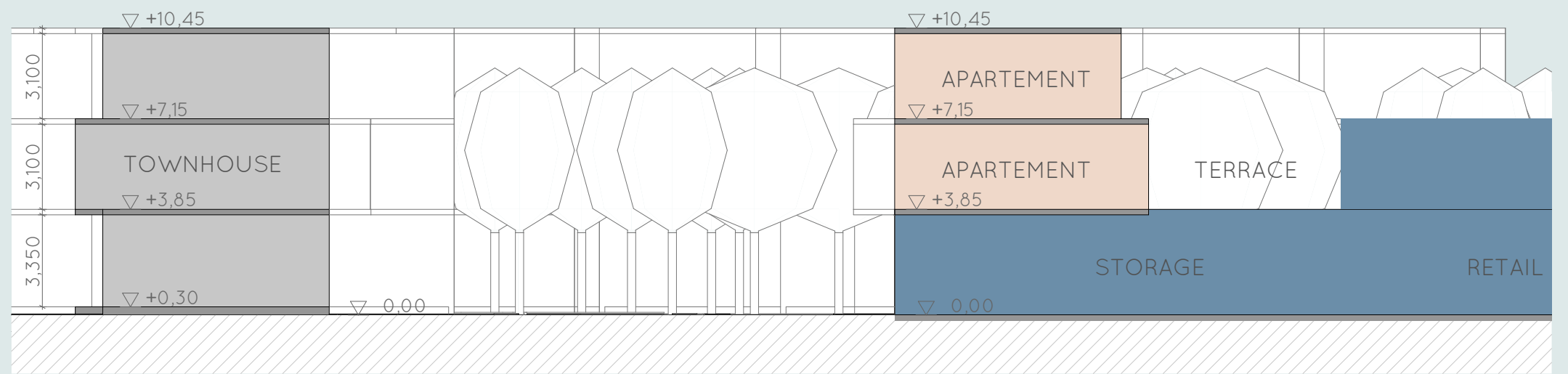
## NEW IDENTITY

BARVIKHA MASTERPLAN FINAL  
MASTERPLAN AREA VIEWS 06





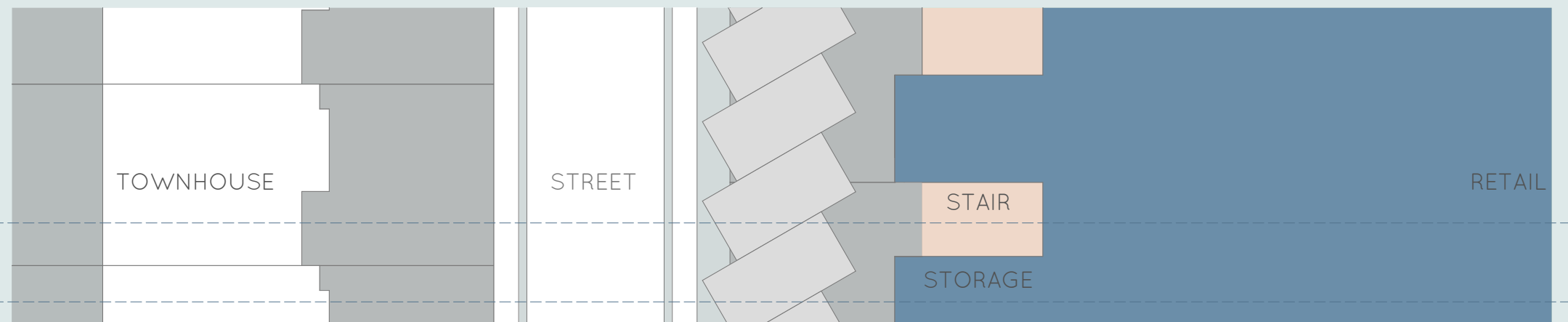
SECTION I-I



SECTION II-II

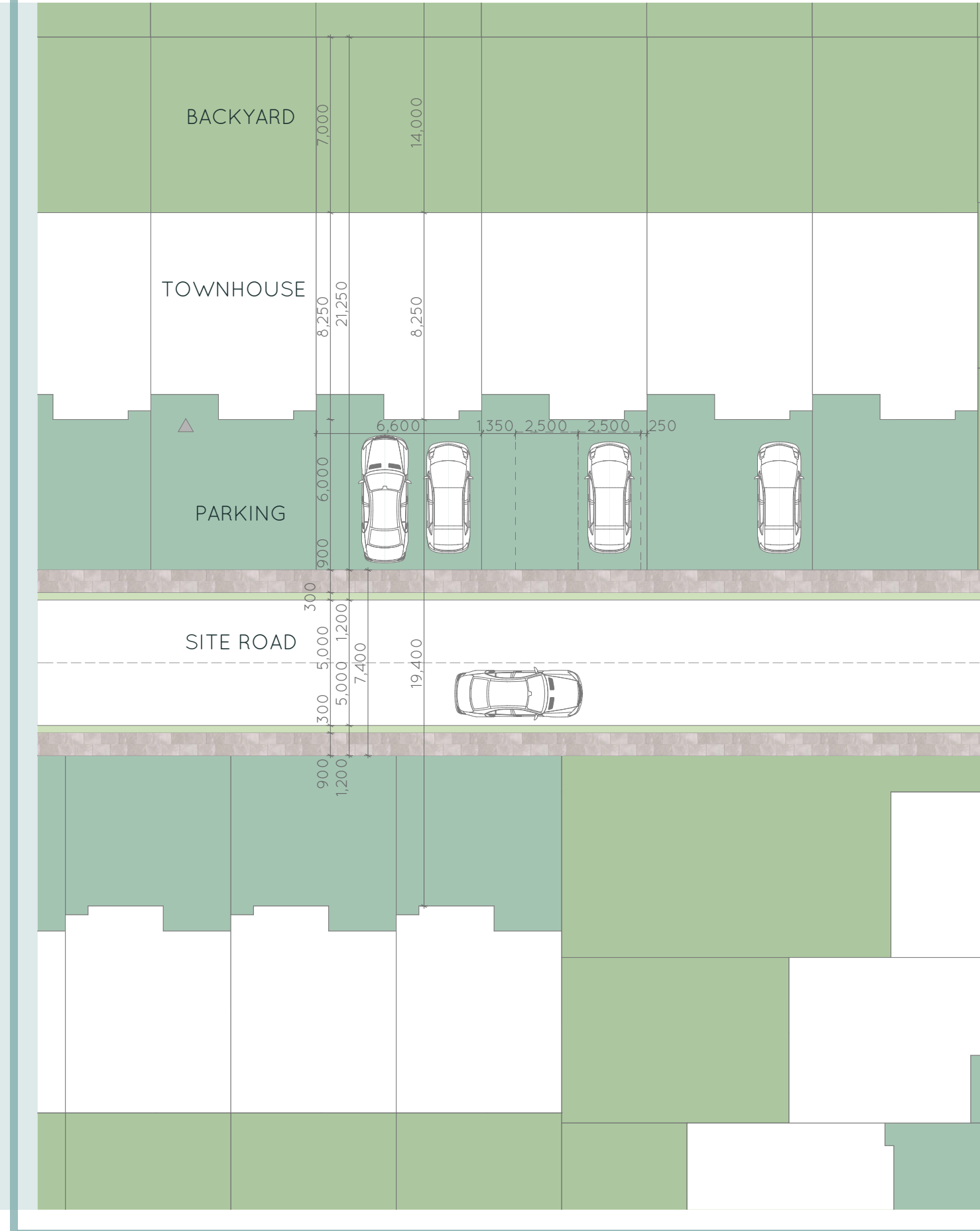
SECTION I-I

SECTION I-I

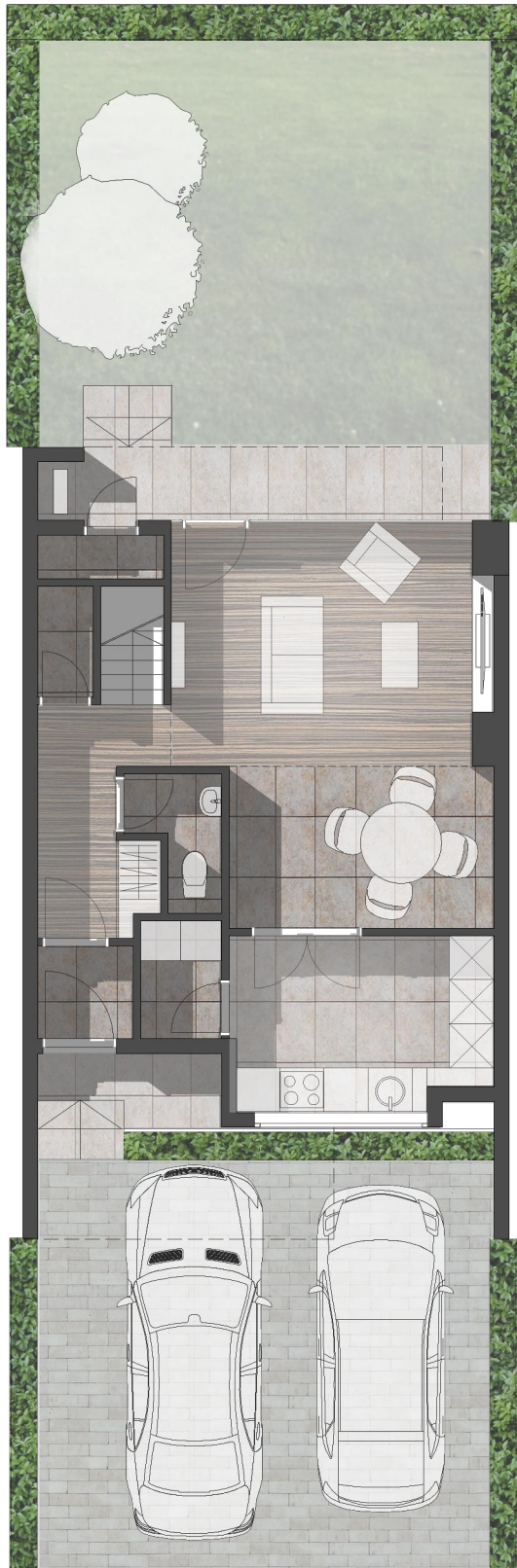


FLOOR PLAN









LEVEL 1



LEVEL 2



LEVEL 3

**TOWNHOUSE  
AREA SCHEDULE - GBA**

LEVEL 1	51,43
LEVEL 2	66,16
LEVEL 3	54,13
<b>TOTAL</b>	<b>171,72</b>

ALL AREAS IN M<sup>2</sup>

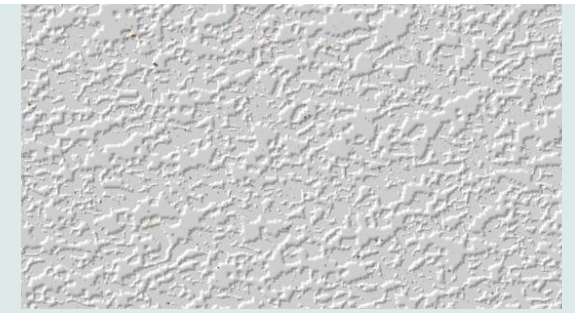




RANDOMIZED MATERIALS



REPEATING VARIATIONS













QUALITY HOMES FOR  
EVERYDAY LIVING





CLEAN  
FORMS

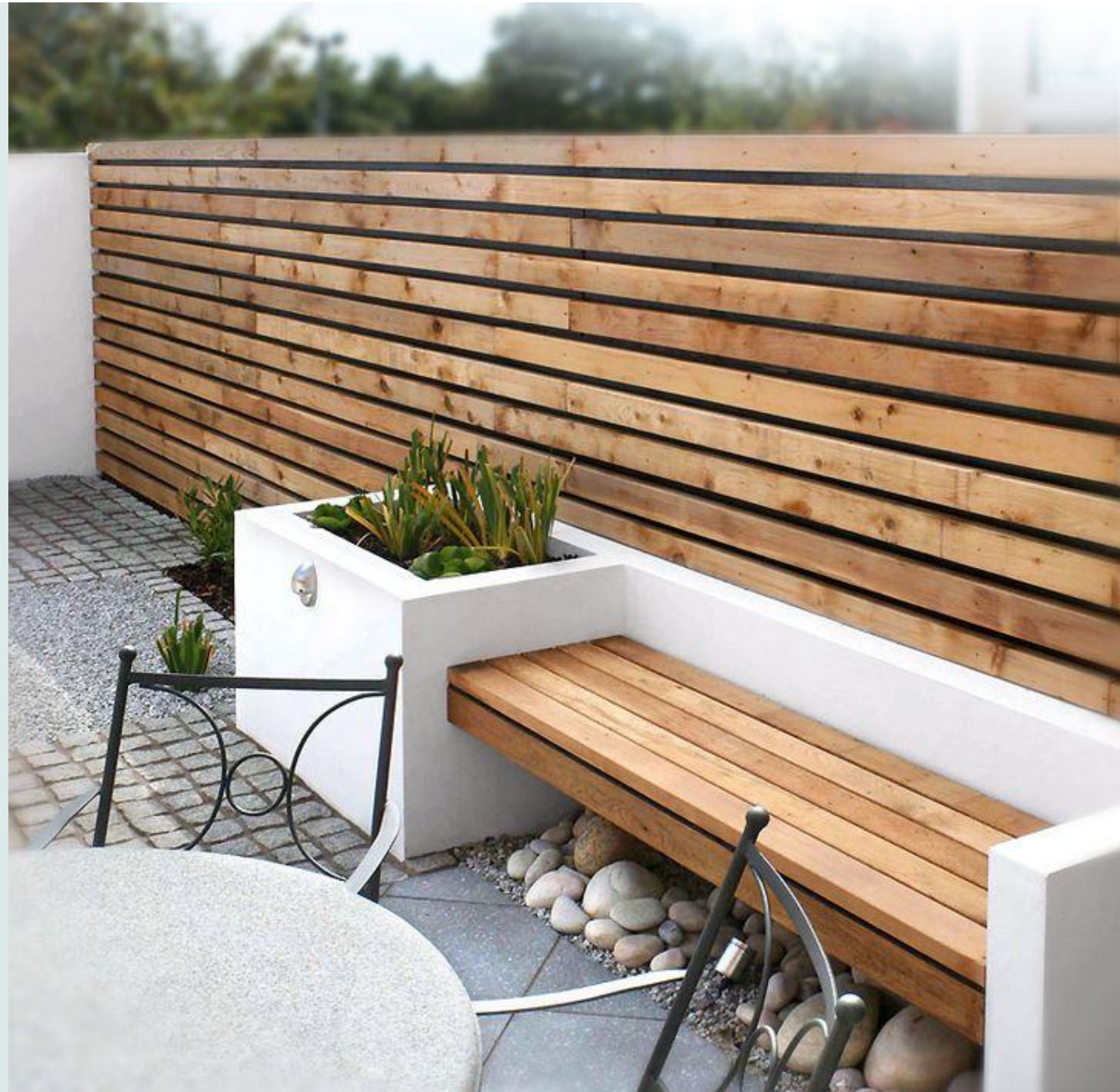


NATURAL  
COLOURS





PRIVATE GARDEN FOR  
EVERY TOWNHOUSES







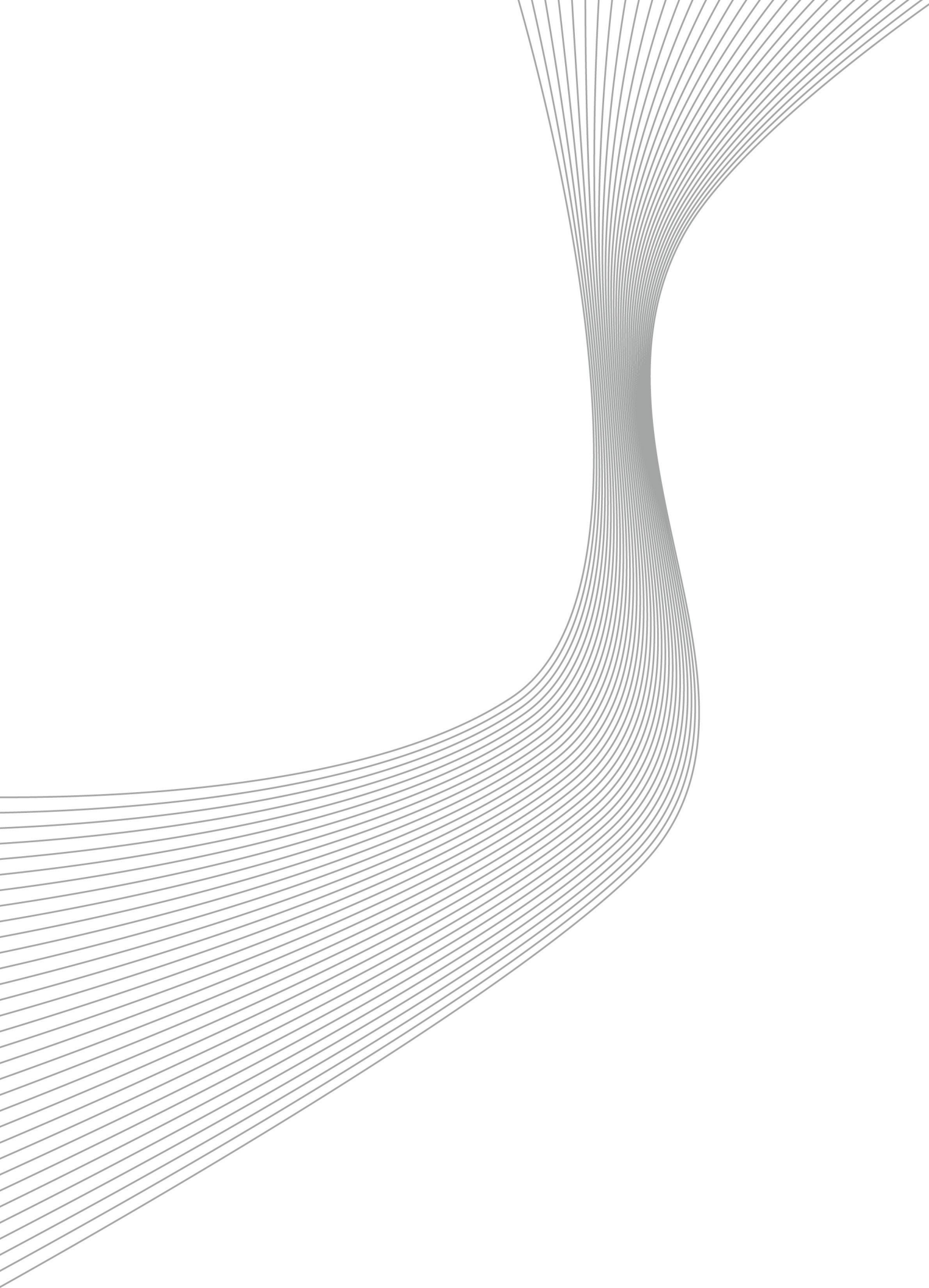












# Dyer

Dyer Moscow  
2A building  
passage Rossoshansky  
Moscow, Russia  
117535

Phone  
+7 (0)495 781 8180

Copyright © 2015 by Dyer

All rights reserved.  
No part of this publication may be reproduced, stored in retrieval system, or transmitted, in any form or by any means, electronic, mechanical, photocopying, recording or otherwise, without written permission of Dyer.